



**TABLE OF CONTENTS**

SHEET NO.	SHEET DESCRIPTION
1	NOTES AND BOM
2	CONFIGURATIONS
3	RECEPTACLE CONNECTOR ASSEMBLY
4	WIRE SHIELD

NOTES: VALID UNLESS OTHERWISE SPECIFIED

- CONNECTOR TO BE SHIPPED WITH TPA IN PRE-LOAD POSITION AS SHOWN IN SECTION Z-Z.
- ALL TEXT TO BE CLEARLY LEGIBLE AND 1.50MM MIN. HEIGHT. MARKING ORIENTATION MAY BE PARALLEL TO THE LENGTH OF THE PART, AS SHOWN, OR PERPENDICULAR TO THE LENGTH OF THE PART.

DATE CODE DESCRIPTION:

- 1st THROUGH 3rd DIGIT = "DAY#" OF THE CALENDAR YEAR. (EXAMPLE FEB. 3rd = '034')
- LAST DIGIT = LAST DIGIT OF CALENDAR YEAR. (EXAMPLE: 2000 = '0')
- SERIAL NUMBER DESCRIPTION:
  - FIRST CHARACTER "M." = ASSEMBLY MACHINE NUMBER
  - FOLLOWING NUMBER STARTS AT "00001" AND IS RESET FOR EACH NEW "DAY#".
- MOLEX PART NUMBER:
  - SEE TABLE

3. DIMENSIONS NOT SHOWN CAN BE OBTAINED FROM THE ASSOCIATED MODEL.

4. GENERAL:

- APPLICATION SPECIFICATION SEE: AS-31380-001
  - CONTAINS: PRODUCT INTRODUCTION, PRODUCT SUMMARY, HARNESS ASSEMBLY, CONNECTOR MATING, AND SERVICE INSTRUCTIONS.
  - DESIGNED TO MATE WITH DEVICE AS SPECIFIED IN THE MATING INTERFACE DRAWINGS CHART.
  - DENOTES DRAWINGS THAT CAN BE ACCESSED AT <<http://ewcap.uscarteams.org/>>.
- PRODUCT SPECIFICATION SEE: PS-31380-100
  - CONTAINS: PRODUCT INTRODUCTION, PRODUCT SUMMARY, RATINGS (CURRENT AND TEMPERATURE), TERMINALS, WIRE DIAMETER RANGE, PRODUCT VALIDATION, AND PRODUCT DEVIATIONS.
- PACKAGING SPECIFICATION PER MOLEX DRAWING: PK-31300-550
- PARTS MUST BE IN COMPLIANCE TO MOLEX CHEMICAL SUBSTANCES FOR PRODUCTS AND PACKAGING SPECIFICATION: QEHS-699000-300
- DATA MUST BE SUBMITTED UNDER THE MOLEX PART NUMBER TO IMDS (COMPANY ID#13255)

5. DESIGN - MATERIALS:

- SEE BOM TABLE IN SD-31380-0002

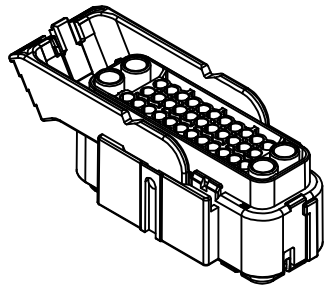
6. DESIGN - GEOMETRY:

- THE 3-D CAD DATA IS BASIC (WITHOUT TOLERANCE) AND MASTER FOR THIS PART WITH THE EXCEPTION OF UNDERLINED DIMENSIONS. DIMENSIONAL INFORMATION NOT SHOWN ON THIS DRAWING IS DEFINED BY THE DATA FILE AT ITS LATEST REVISION.
- GEOMETRIC DIMENSIONS AND TOLERANCES PER ASME Y14.5M-2009
- EDGES AND UNDIMENSIONED DETAILS PER ISO13715
- CORNERS SHOWN AS SHARP TO BE R 0.2 MAX.
- VISUAL DEFECTS SHALL MEET COSMETIC STANDARD PS-45499-002 (Class B).

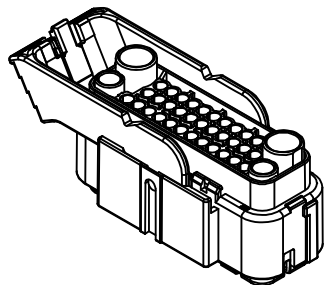
7. MUST BE USED WITH WIRE SHIELD - MOLEX PART NUMBER 31382-1001. WIRE SHIELD SHIPPED SEPARATELY.

**MATING INTERFACE DRAWINGS**

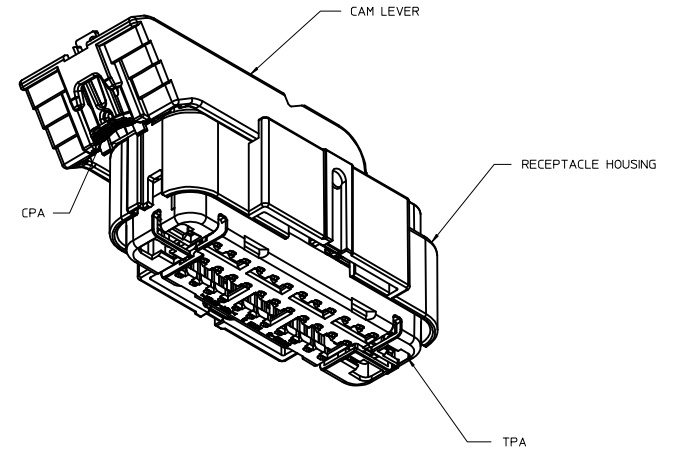
SERIES	INTERFACE DEFINITION
31380	*999-S-038-3-Z01
31381	*999-S-038-3-Z02



31381 SERIES



31380 SERIES

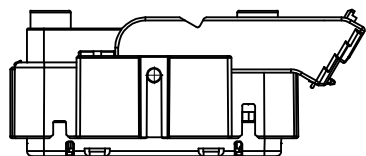
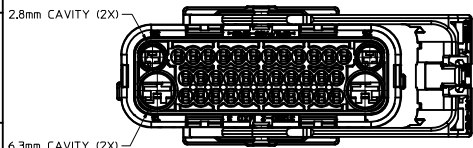


INSPECTION NUMBER LOG	
LAST NUMBER: 2	A INITIAL RELEASE
ADDED:	
REMOVED:	

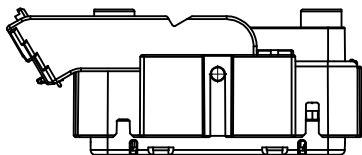
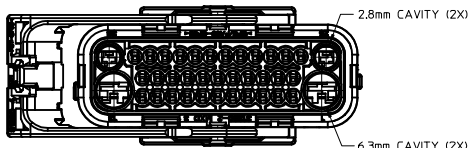
ENTER DESCRIPTION EC NO: UAU2014-1972 DRAWN: APROFFITT 2014/06/26 CHKD: CRIZZI 2014/06/27 APPR: WKOSHY 2014/06/30	QUALITY SYMBOLS	GENERAL TOLERANCES (UNLESS SPECIFIED)		DIMENSION STYLE		DRAWN BY DATE APPROFFITT 2014/06/26	DATE	TITLE
		mm	INCH	MM ONLY	SCALE			
REV DESCRIPTION	∇=0	4 PLACES	± --- ± ---	APPROVED BY DATE	DATE	USCAR 38 WAY HYBRID RCPT SEALED ASSEMBLY	2014/06/30	1.5:1
	∇=0	3 PLACES	± --- ± ---	CHECKED BY	DATE			
	∇=0	2 PLACES	± 0.13 ± ---	APPROVED BY DATE	DATE			
	∇=0	1 PLACE	± 0.25 ± ---	WKOSHY 2014/06/30				
		0 PLACE	± --- ± ---	MATERIAL NO.				
		ANGULAR ± 1 °		SEE NOTE 5a.		DOCUMENT NO.		
		DRAFT WHERE APPLICABLE MUST REMAIN WITHIN DIMENSIONS		SIZE 1		SD-31380-0001		SHEET NO. 1 OF 4
THIS DRAWING CONTAINS INFORMATION THAT IS PROPRIETARY TO MOLEX INCORPORATED AND SHOULD NOT BE USED WITHOUT WRITTEN PERMISSION								

**SHEET DESCRIPTION**

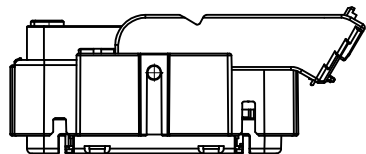
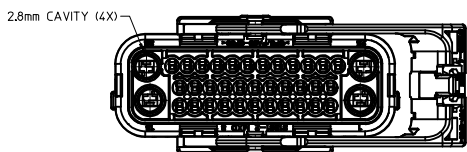
CONFIGURATIONS



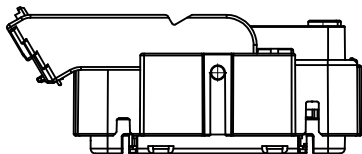
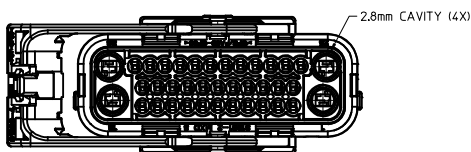
31380-10XX  
TYPE II HARNESS ASSEMBLY  
COUNTERCLOCKWISE LEVER THROW



31380-11XX  
TYPE II HARNESS ASSEMBLY  
CLOCKWISE LEVER THROW



31381-10XX  
TYPE I HARNESS ASSEMBLY  
COUNTERCLOCKWISE LEVER THROW

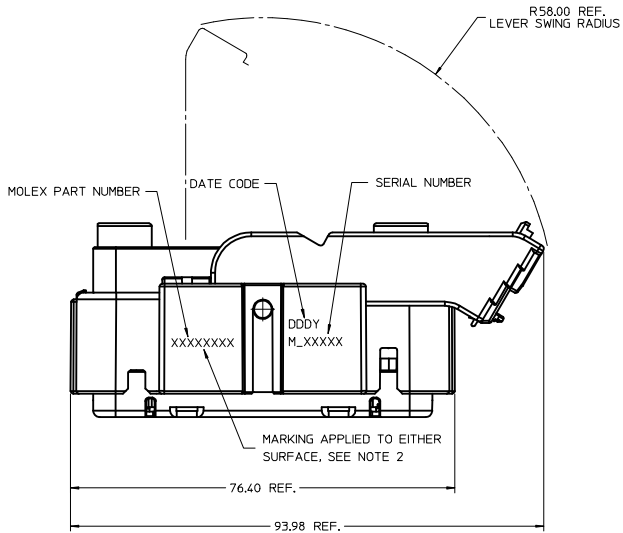
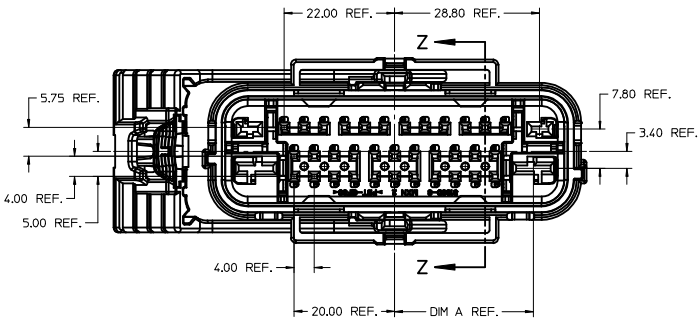
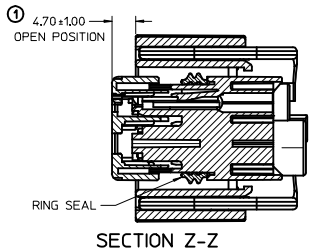
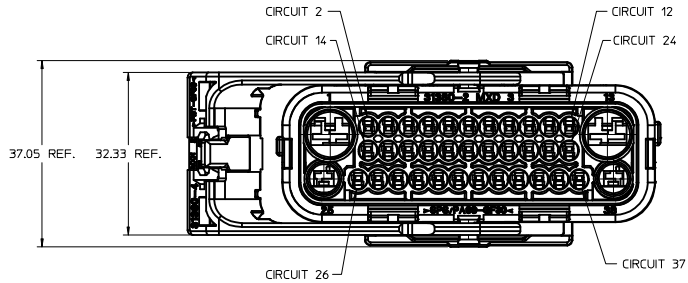


31381-11XX  
TYPE I HARNESS ASSEMBLY  
CLOCKWISE LEVER THROW

<b>ENTER DESCRIPTION</b> EDC NO: UAU2014-1972 DRAWN BY: APROFFITT 2014/06/26 CHECKED BY: CHYKORIZZI 2014/06/27 APPR: VKOSHY 2014/06/30 REV: A	QUALITY SYMBOLS	GENERAL TOLERANCES (UNLESS SPECIFIED)	DIMENSION STYLE	SCALE	DESIGN UNITS	THIRD ANGLE PROJECTION
	▽=0	mm INCH	MM ONLY	1.5:1	METRIC	
	▽=0	4 PLACES ± --- ± ---	DRAWN BY DATE	TITLE		
	▽=0	3 PLACES ± --- ± ---	APPROFFITT 2014/06/26	USCAR 38 WAY HYBRID RCPT SEALED ASSEMBLY		
▽=0	2 PLACES ± 0.13 ± ---	CHECKED BY DATE	APPROVED BY DATE			
▽=0	1 PLACE ± 0.25 ± ---		VKOSHY 2014/06/30			
	0 PLACE ± --- ± ---		MATERIAL NO. DOCUMENT NO.			
	ANGULAR ± 1 °		SEE NOTE 5a. SD-31380-0001			
	DRAFT WHERE APPLICABLE MUST REMAIN WITHIN DIMENSIONS		SHEET NO. 2 OF 4			
			THIS DRAWING CONTAINS INFORMATION THAT IS PROPRIETARY TO MOLEX INCORPORATED AND SHOULD NOT BE USED WITHOUT WRITTEN PERMISSION			

**SHEET DESCRIPTION**  
RECEPTACLE CONNECTOR ASSEMBLY

CHARTED DIMENSIONS	
SERIES	DIMENSION
31380	A
31381	27.58
	27.90



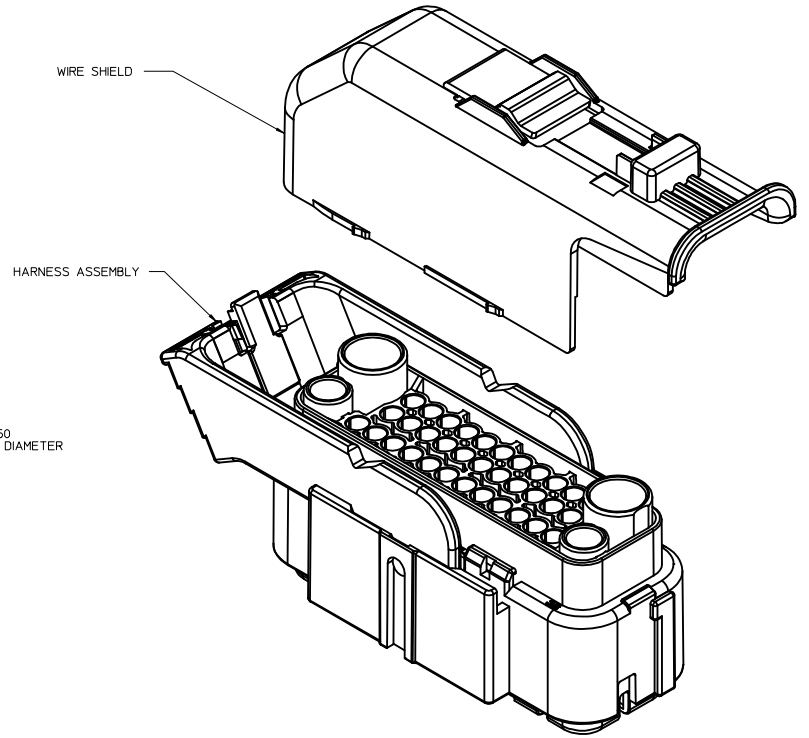
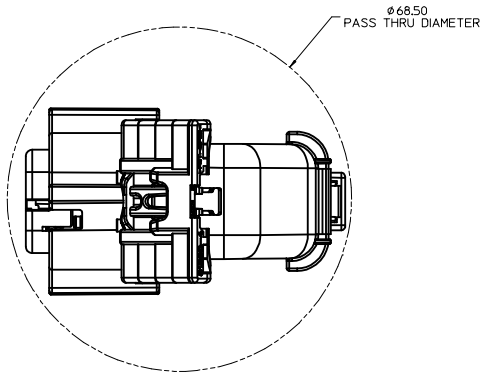
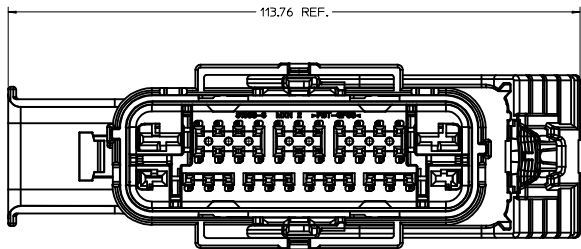
<b>ENTER DESCRIPTION</b> EC NO: UAU2014-1972 DRAWN: APROFFITT 2014/06/26 CHKD: CRIZZI 2014/06/27 APPR: VKOSHY 2014/06/30	<b>QUALITY SYMBOLS</b> ∇=0 ∇=0 ∇=0	<b>GENERAL TOLERANCES (UNLESS SPECIFIED)</b>		<b>DIMENSION STYLE</b> MM ONLY		SCALE 2:1	DESIGN UNITS METRIC	THIRD ANGLE PROJECTION	
		4 PLACES ± --- ± --- 3 PLACES ± --- ± --- 2 PLACES ± 0.13 ± --- 1 PLACE ± 0.25 ± --- 0 PLACE ± --- ± ---	m/m INCH	DRAWN BY APROFFITT	DATE 2014/06/26	TITLE USCAR 38 WAY HYBRID RCPT SEALED ASSEMBLY			
		ANGULAR ± 1 ° DRAFT WHERE APPLICABLE MUST REMAIN WITHIN DIMENSIONS		APPROVED BY VKOSHY	DATE 2014/06/30	MATERIAL NO. SEE NOTE 5a.			
				DOCUMENT NO. SD-31380-0001		SHEET NO. 3 OF 4			



**SHEET DESCRIPTION**  
WIRE SHIELD

WIRESHIELD NOTES: VALID UNLESS OTHERWISE SPECIFIED

1. GENERAL:  
 a. APPLICATION SPECIFICATION SEE: AS-31380-001  
 -WIRE SHIELD (MOLEX PART NUMBER 31382-1001) MUST BE USED WITH HARNESS ASSEMBLY  
 -WIRE SHIELD SHIPPED SEPARATELY  
 -FOR ADDITIONAL INFORMATION SEE THE WIRE SHIELD COMPONENT DRAWING SD-31382-100.



<b>ENTER DESCRIPTION</b> EC NO: UAU2014-1972 DRWNG: APROFIT 2014/06/26 CHKDR: IZZI 2014/06/27 APPR: VKOSHY 2014/06/30	<b>QUALITY SYMBOLS</b> ∇=0 ∇=0 ∇=0	<b>GENERAL TOLERANCES (UNLESS SPECIFIED)</b>		<b>DIMENSION STYLE</b> MM ONLY		SCALE 2.5:1	DESIGN UNITS METRIC	THIRD ANGLE PROJECTION
		4 PLACES ± --- ± --- 3 PLACES ± --- ± --- 2 PLACES ± 0.13 ± --- 1 PLACE ± 0.25 ± --- 0 PLACE ± --- ± ---	mm INCH --- --- --- --- --- --- --- --- --- ---	DRAWN BY APROFIT	DATE 2014/06/26	TITLE USCAR 38 WAY HYBRID RCPT SEALED ASSEMBLY		
		DRAFT WHERE APPLICABLE MUST REMAIN WITHIN DIMENSIONS		APPROVED BY VKOSHY	DATE 2014/06/30	DOCUMENT NO. SD-31380-0001		SHEET NO. 4 OF 4
		ANGULAR ± 1 °		SEE NOTE 5a.		THIS DRAWING CONTAINS INFORMATION THAT IS PROPRIETARY TO MOLEX INCORPORATED AND SHOULD NOT BE USED WITHOUT WRITTEN PERMISSION		





# Mouser Electronics

Authorized Distributor

Click to View Pricing, Inventory, Delivery & Lifecycle Information:

[Molex:](#)

[31380-1100](#)